

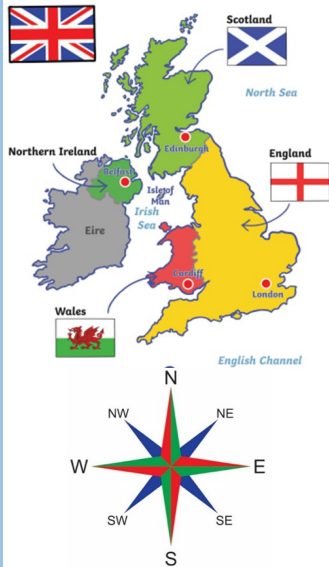
What is special about the UK?

Y3/4 Geography

What are the countries and capital cities of the UK and where are they? (Using 8 compass points)

What is a county?

What are the key physical features in the UK and where are they? (4-figure grid reference)



The United Kingdom (also known as the UK) is a country located off the north-eastern coast of mainland Europe.

Countries in the UK:
England, Scotland, Wales and Northern Ireland.

Capital cities:
England = London
Scotland = Edinburgh

A county is a term used to refer to different areas across England usually consisting of various towns and villages.

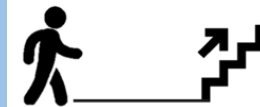
Our county:
Nottinghamshire

Scotland: 'council areas'
Wales: 'principal areas'
Northern Ireland: 'districts'.



NEWQUAY

- Coasts
- Beaches
- Cove
- Rivers
- Forest
- Cliff



"Along the corridor, up the stairs"

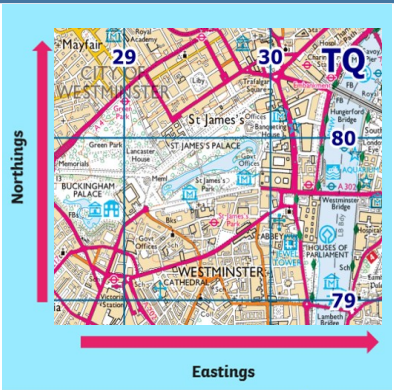
Newquay Bay
 81 62

What are the key human features in the UK and where are they? (4-figure grid reference)

How has our local area changed over time? (Human and physical)

Fieldwork

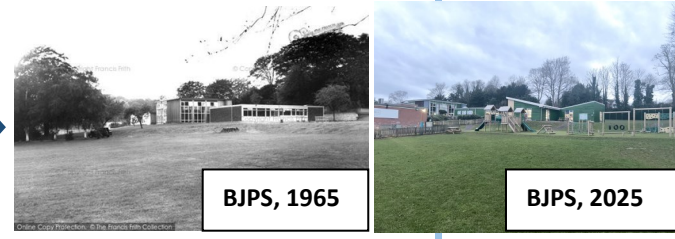
Learning outside of the classroom, to gain practical experiences and knowledge through firsthand observation.



- LONDON**
- Cathedral
 - Museum
 - Hospital
 - School
 - Palace
 - Bridge

Westminster Cathedral 29 79

Human



Physical



I am a geographer...

A geographer studies, explores and makes discoveries about the world around them, making connections between physical and human features.